



DRN53

key escutcheon round

Product information

Code: 3901N001IZXX0

Finish: PVD satin black

UNIT: Piece

Collection: ECLIPSE

Designer: David Rockwell

EAN code: 8718009416396

ECLIPSE by David Rockwell

The ECLIPSE series is a total concept collection consisting of door, window, and furniture fittings.

Finishes

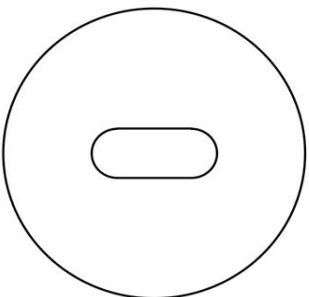
- satin stainless steel
- bronze
- PVD satin gold
- PVD satin black

ECLIPSE DRN53

lever handle accessory
key escutcheon
stainless steel



53



38



6.5

FORMANI®

FORMANI HOLLAND B.V.
EUROPEAN
6199 AB MAASTRICHT-AIRPORT NL
T +31 (0)43 308 90 00
INFO@FORMANI.COM
WWW.FORMANI.COM

Formani filename: 3901ND01_DRN53_V01.dwg

Drawn by: Christian Birribois

Creation date: 26-11-2020

Type :

ECLIPSE DRN53

Version:

V01

Description:

lever handle accessory
key escutcheon
stainless steel

Format

A3

METALFORM

ECLIPSE

by David Rockwell

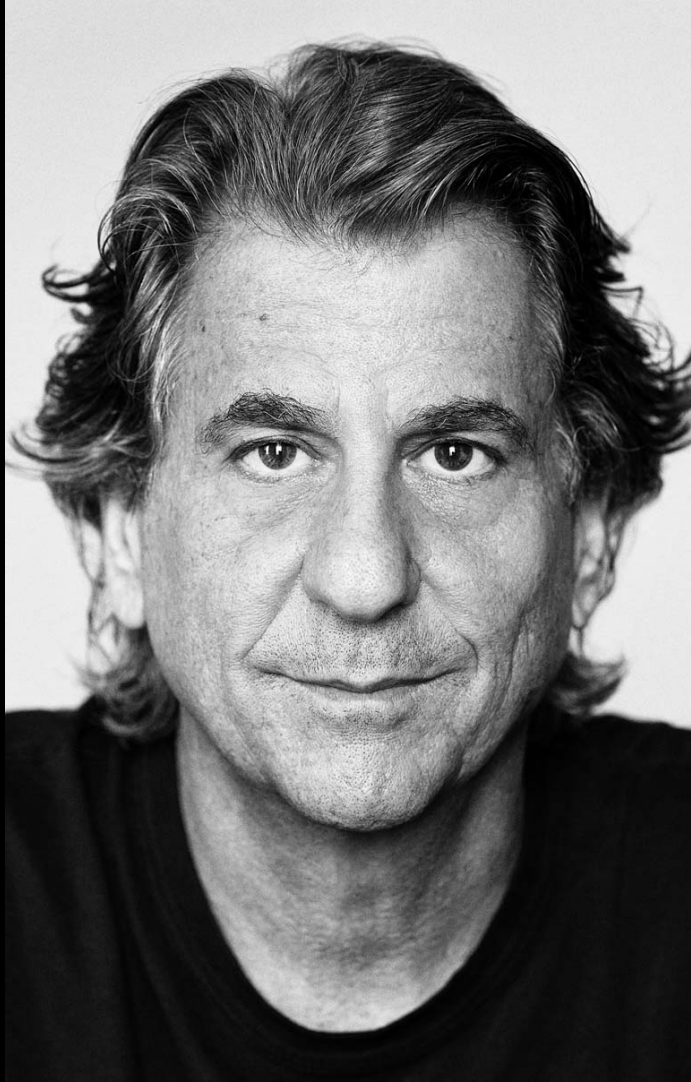
Simplicity meets innovation in ECLIPSE by David Rockwell. The iconic silhouette is a cylindrical form with a curved, carved channel—an inflection point that perfectly meets the hand's grasp. Simple, sculptural tooling offers both a square and round return option for a distinctive profile. The sublime finish creates soft lines that ensure a perfect ergonomic grip. The door handle is manufactured as one piece, allowing the moon-like detailing to continue seamlessly along the entire length of the arm and over the curve to the start of the neck.

ECLIPSE

by David Rockwell



METALFORM
FORMANI®



David Rockwell

New York, USA, 1956

Design philosophy: It's about observing a situation - a process, object or place - and believing it can better.

Formani and David Rockwell have established their first design collaboration, which resulted in the 'Eclipse' hardware collection. 'We approached our design concept like we would for an interactive set piece on stage—transforming something everyday into a special object that marks a transition and transformation in a wide range of interiors,' said David Rockwell, founder and President, Rockwell Group. "With an inflection point that responds to the human touch, Eclipse is a pleasure to use as well as observe."

**METALFORM
FORMANI®**

Brand story

FORMANI has evolved considerably over the last few decades – from a Dutch family business to an internationally renowned designer brand, from door handles to total design concepts, from product development to collaborations with world-class designers. It was an evolution driven by pure ambition and courage. Our motto, ‘Obsessed with details’, epitomizes everything we do, from product to process, from strategy to service. Because it is these details that make the difference between good and perfect. At FORMANI, good is the enemy of great.

Formani Holland b.v.
Europalaan 12
6199 AB
Maastricht-Airport

T: +31(0)43 308 9000
E: info@formani.com

Chamber of Commerce:
146 27 479

**METALFORM
FORMANI®**

METALFORM

MASTERS OF METAL

UNITED KINGDOM

METALFORM

NORWAYMETAL LTD

53 Chelsea Manor Street

London, SW3 5RZ

SALES@METALFORM.UK

+44 20 81298814

GERMANY

METALFORM GMBH

Carl-Zeiss-Ring 15A

85737 Ismaning

SALES@METALFORMGROUP.DE

+49 17663630406

NORWAY

METALFORM AS

Brochmannsveien 2

1950 Rømskog

SALG@METALFORM.NO

+47 401 62 446

METALFORMGROUP

SALES@METALFORMGROUP.COM